

**M.V. "PALMERTON" - M.V. "PALABORA" - M.V. "PALEMBANG" - M.V. "PALAU"**

MV "PALMERTON": CALL SIGN: V2EM7 - IMO NO: 9501863  
 MV "PALABORA": CALL SIGN: V2ES2 - IMO NO. 9501875  
 MV "PALEMBANG": CALL SIGN: V2ET3 - IMO NO: 9501887  
 MV "PALAU": CALL SIGN: V2EZ5 - IMO NO. 9501899

T/C OWNERS: K/S COMBI LIFT - 4220 KORSOER - DENMARK  
 PORT OF REGISTRY: ST. JOHNS - FLAG: ANTIGUA



**MAIN PARTICULARS :**

**CLASS:**

GL +100 A5 E3 MULTI-PURPOSE DRY CARGO SHIP  
 EQUIPPED FOR CARRIAGE OF CONTAINERS  
 AND DANGEROUS GOODS  
 STRENGTHENED FOR HEAVY CARGO  
 NAV-O, BWM, ENVIROMENTAL PASSPORT  
 +MC AUT E3, IW

**BUILDERS:**

PALMERTON: KOUAN SHIPYARD - NOVEMBER 2009  
 PALABORA: KOUAN SHIPYARD - JANUARY 2010  
 PALEMBANG: KOUAN SHIPYARD - MAY 2010  
 PALAU: KOUAN SHIPYARD - AUGUST 2010

**REGISTER TONNAGE:**

TYPE	INTERNATIONAL
GROSS	11.473
NET	3834

**DIMENSIONS:**

LENGTH OVER ALL	133,00 M
LENGTH BETWEEN PP	122,85 M
BREADTH MOULDED	23,00 M
DESIGN DRAFT LOADED SUMMER	7,80 M

**DEAD WEIGHT CAPACITIES:**

DEAD WEIGHT A.T.	10.128 MTS
------------------	------------

**CARGO HOLD:**

BOXED – STEEL FLOORING – TWEEN DECK HOISTABLE IN 3  
 DIFFERENT HEIGHTS (SEE DRAWING)

**CUBIC CAPACITIES IN HOLD:**

TOTAL CUBIC CAPACITY	15.700 CBM
----------------------	------------

**CRANES:**

2 ELECTRIC HYDRAULIC CRANES PORT SIDE 450 TS / 17,5 M & 250  
 TS / 30 M COMBINABLE UP TO 900 TS

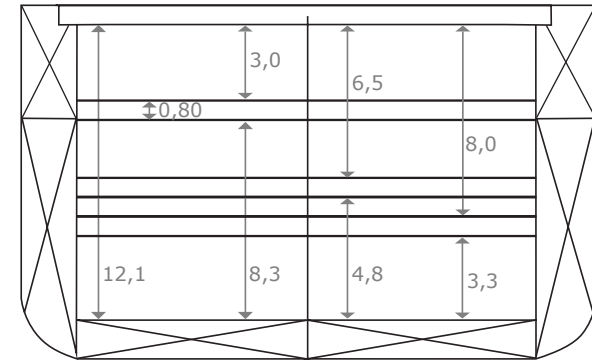
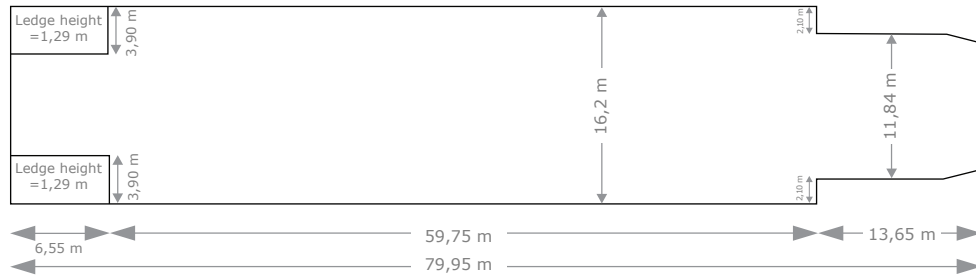
**DECK STRENGTH:**

TANKTOP - STEEL	16,0 TS PER M2
TWEEN DECK - STEEL PONTOONS	4,5 TS PER M2
MAIN DECK - STEEL PONTOONS	2,5 TS PER M2

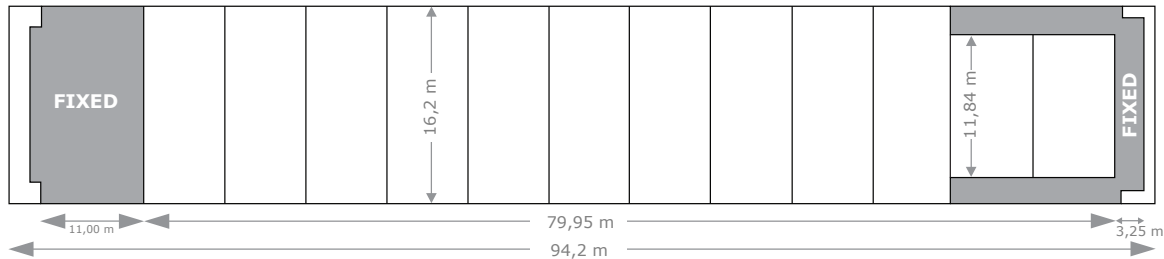
**TANK CAPACITIES:**

FUELOIL	1.244 M3
MDO	125 M3
FRESH WATER	180 M3
BALLAST WATER	7.800 M3

### TANK TOP

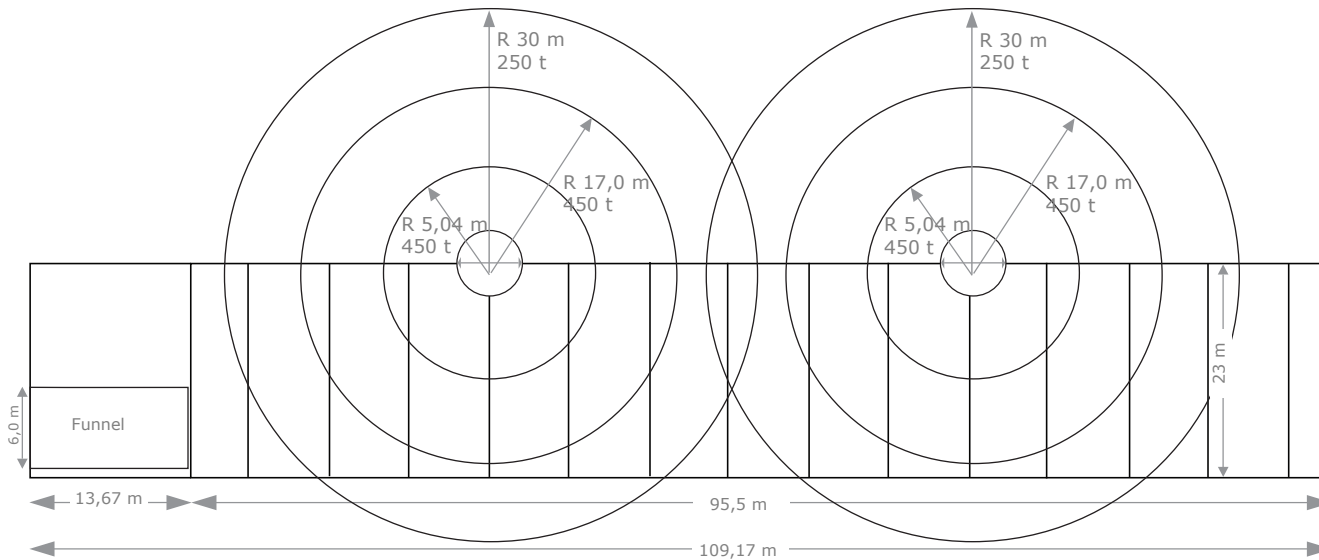


### HATCH OPENING/TWEEN DECK



Hatch opening/tween deck highest position 94,2x16,2, Tween deck middle and lowest position 80x16,2.

### WEATHER DECK



M.V. "PALMERTON" - M.V. "PALABORA"  
M.V. "PALEMBANG" - M.V. "PALAU"