

FACT SHEET

MV "COMBI DOCK I / II / III / IV"

MV "COMBI DOCK I": CALL SIGN: V2DV7 - IMO NO: 9400473
 MV "COMBI DOCK II": CALL SIGN: V2PV7 - IMO NO. 9400485
 MV "COMBI DOCK III": CALL SIGN: V2PX8 - IMO NO: 9432828
 MV "COMBI DOCK IV": CALL SIGN: V2QB4 - IMO NO. 9509970

T/C OWNERS: K/S COMBI LIFT - 4220 KORSOER - DENMARK
 PORT OF REGISTRY: ST. JOHNS - FLAG: ANTIGUA



MAIN PARTICULARS :

CLASS: GL + 100 A5E NAV- OC; IW; BMW- 5; STRENGTHENED FOR HEAVY CARGO, SEMI SUBMERSIBLE VESSEL; RO/RO SHIP; CONTAINER FITTED

BUILDERS: LLOYD WERFT, BREMERHAVEN, GERMANY
 JANUARY 2008 / AUGUST 2008 / JANUARY 2009 / JANUARY 2010

REGISTER TONNAGE:

TYPE	INTERNATIONAL
GROSS	17341
NET	5203

DIMENSIONS:

LENGTH OVER ALL	162,30 M
LENGTH BETWEEN PP	154,20 M
BREADTH MOULDED	25,40 M
DESIGN DRAFT WITH OPEN HATCH	5,60 M
DRAFT FULLY LOADED SUMMER	6,60 M
DOCKING DRAFT	11,00 M

DEAD WEIGHT CAPACITIES:

DEAD WEIGHT AT 5,60 M DRAFT	7600 MTS
DEAD WEIGHT AT 6,60 M DRAFT	11000 MTS

CONTAINER CAPACITIES:

TOTAL CAPACITY 20' x 8' x 8'6"	1383
HEREOF: IN CARGO HOLD	420
ON DECK	963

STACKLOAD:

TANKTOP	100 TS EACH 20'	140 TS EACH 40'
DECK	50 TS EACH 20'	65 TS EACH 40'

HATCH (DOCKSIZE):

BOXSHAPED HATCH	132,00 X 18,00 M X 9,40 M
	132,60 X 25,40 M

STERNRAMP:

750 MT - WIDTH 18,00 M x LENGTH 10,80 M WITHOUT FLAP/
 13,80 M WITH FLAP

VESSEL CAN TRADE WITH OPEN HATCHES AND STERNRAMP.

CARGO HOLD:

FITTED FOR DANGEROUS CARGO SOLAS -II-2, REG 54 HOLDS
 FITTED WITH SMOKE DETECTORS, CO2 SYSTEM, SPRINKLER.
 PREPARED FOR MOON POOL.

CUBIC CAPACITIES IN HOLD:

W/O TWEENDECK HATCH COVERS: 20900 CBM / 22800 CBM

CRANES:

2 ELECTRO HYDRAULIC CRANES PORT SIDE 350 TS / 18 M &
 100 TS / 26 M COMBINABLE UP TO 700 TS
 1 ELECTRO HYDRAULIC CRANE PORT SIDE 200 TS / 14 M &
 80 TS / 31 M

DECK STRENGTH:

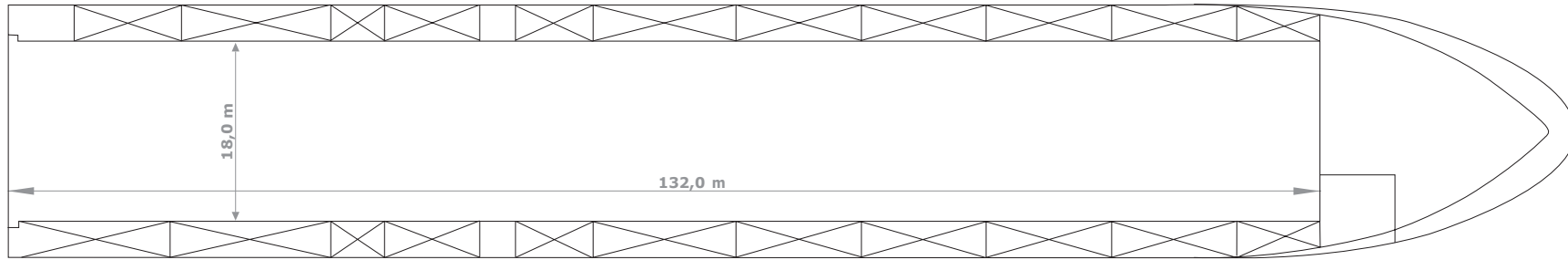
TANKTOP - STEEL	16,00 TS PER M2
TWEENDECK - HOLD	4,50 TS PER M2
HATCH COVER	2,55 TS PER M2

TANK CAPACITIES:

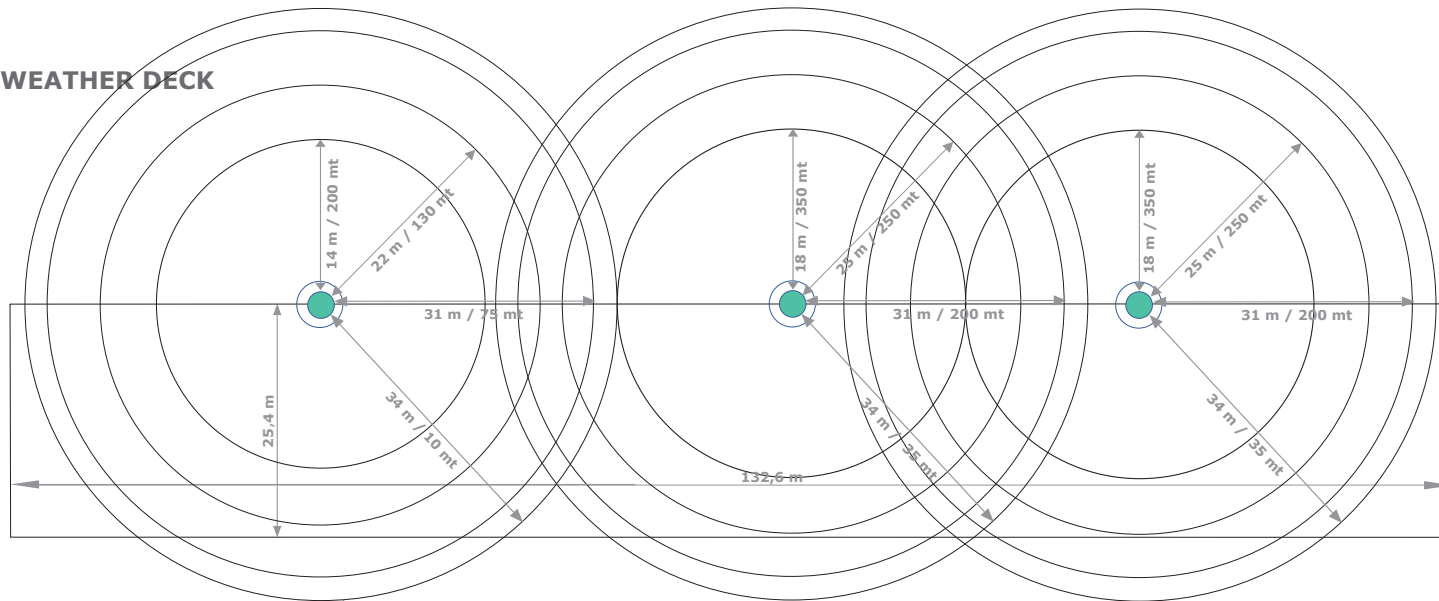
FUELOIL	ABT. 1265,0 TS
MDO	ABT. 129,0 TS
FRESH WATER	ABT. 270,0 TS
BALLAST WATER	ABT. 17400,0 TS

VESSEL EQUIPPED WITH 2 X BECKER RUDDER, TWIN SCREW
 AND 1X BOW-THRUSTER. PREPARED FOR DP 01

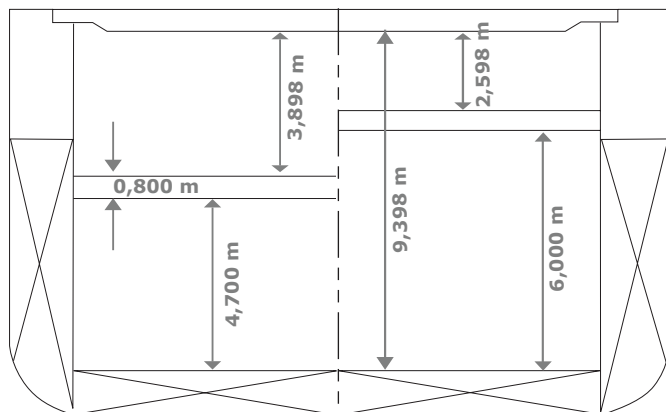
TWEEN DECK / TANKTOP



WEATHER DECK



From 0,00 m to 132,00 m | From 0,00 m to 52,00 m



MS "COMBI DOCK I / II / III / IV"